



**The Mighty
Waikato**

Where magic runs deep

**PRODUCT MANUAL
2025**

Waikato, New Zealand



Hamilton Gardens

About us

Hamilton & Waikato Tourism is the regional tourism organisation (RTO) for the mighty Waikato region - a region famous for Middle-earth movie magic, stunning walking and cycle trails and legendary surf beaches.

Just 1.5 hours drive south of Auckland International Airport, our metropolitan hub of Hamilton is the ideal location to base your clients for the first or last nights in their North Island itineraries with a range of quality accommodation options on offer. From city hotels to country escapes, guests will enjoy some very special Waikato hospitality. The region is well-known for its nature-based eco attractions as well as picturesque cycle trails, award-winning foodie experiences and the renowned Hamilton Gardens.

As passionate ambassadors of the region, HWT aims to ensure visitors to enjoy the wide variety of experiences and places throughout the mighty Waikato, in turn contributing to the sustainable economic, social, environmental and cultural benefit of the wider community.

Hamilton & Waikato Tourism works closely with travel trade, providing assistance for general information, product enquiries, itinerary planning and familiarisations/educational.

Contact the team:

trade@waikatonz.com

+ 64 7 843 0056

Trade Resources: waikatonz.com/trade

Guide to the Mighty Waikato

Situated in the central North Island, we're famous for Middle-earth Movie Magic, hidden wonders, the iconic Waikato River, legendary surf beaches, great cycle trails and that's just the start....

What we are known for...

Middle-earth Movie Magic

Experience a slice of the 'real Middle-earth' with a visit to the picturesque Hobbiton Movie Set™ near Matamata. See the living film set as featured in the *Lord of the Rings* and *The Hobbit* trilogies on a guided tour. Enjoy an exclusive Southfarthing brew at the Green Dragon Inn, while hearing spell-binding tales of how the set came to be.

Now Open: A premier adventure with a glimpse into the intricate craftsmanship that goes into bringing The Shire to life. The Behind The Scenes Tour will give you a peek behind the curtain of how the hobbiton magic is made.

Hamilton Gardens

Experience a day of unexpected delights at Hamilton Gardens, where 18 Enclosed Gardens transport you through diverse cultures and times. Unlike any botanical garden, our unique attraction is rated among the top 3 things to do in New Zealand and is in the top 1% of attractions globally on Trip Advisor.

Each turn reveals a new world, filled with intricate details and hidden surprises. Come to capture the beauty, uncover the meaning and create unforgettable memories and stories to share.

Hamilton City

New Zealand's fourth largest city, situated on the banks of the mighty Waikato River, Hamilton is the region's main hub and the perfect place to base yourself for your first or last night stay in New Zealand.

With a vibrant arts scene, great shopping, award-winning restaurants and a bustling nightlife, Hamilton City offers myriad options for entertainment.

Outdoor Adventures

Some of New Zealand's most well-loved trails and tracks thread throughout the region.

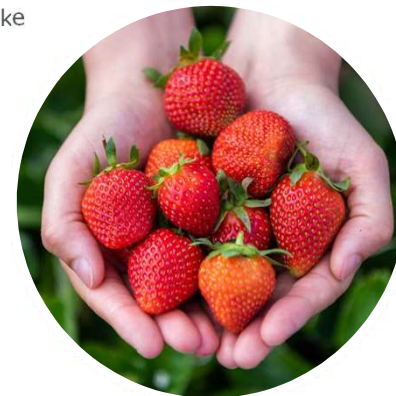
New Zealand's longest river, the mighty Waikato, provides excellent kayaking, boating and other water sports opportunities. The quintessential seaside town of Raglan is a mecca for surfers, while the Raglan Harbour is sought after for kayaking, paddle-boarding and sunset cruises.

The region is also home to two of the nation's Great Rides, each offering different adventures. Hiking trails range from family-friendly experiences to more challenging winding mountain tracks with the view at the summit the perfect reward.

Gourmet Delights

It's a foodies paradise here, with award-winning restaurants, eateries and artisan producers. Local cheesemakers are highly regarded as some of the best in the country, while the region's ice cream makers are acclaimed for their creamy creations and imaginative flavour combinations.

As one of the top growing regions of summertime berries in the country, make the most of the season by visiting one of many farms and orchards where you can pick your own delicious, sun-ripened strawberries, blueberries, raspberries, summer fruits and more.



Guide to the Mighty Waikato

Stay in Hamilton or Cambridge because...



Only 90 minutes south from Auckland International Airport - perfect for first or last night accommodation



Range of accommodation with better availability in peak times



Hub for iconic attractions Hobbiton Movie Set™ and internationally renowned Hamilton Gardens



Vibrant city with award-winning eateries and gourmet foodie hotspots



Authentic, real and unique experiences



Friendly, welcoming people



See lots without travelling far- Go from sandy beaches, a vibrant city and rolling farmland to underground adventures, all within an hour from each other!



Year-round destination - mild winter temperatures and no snow



Home to the Māori King

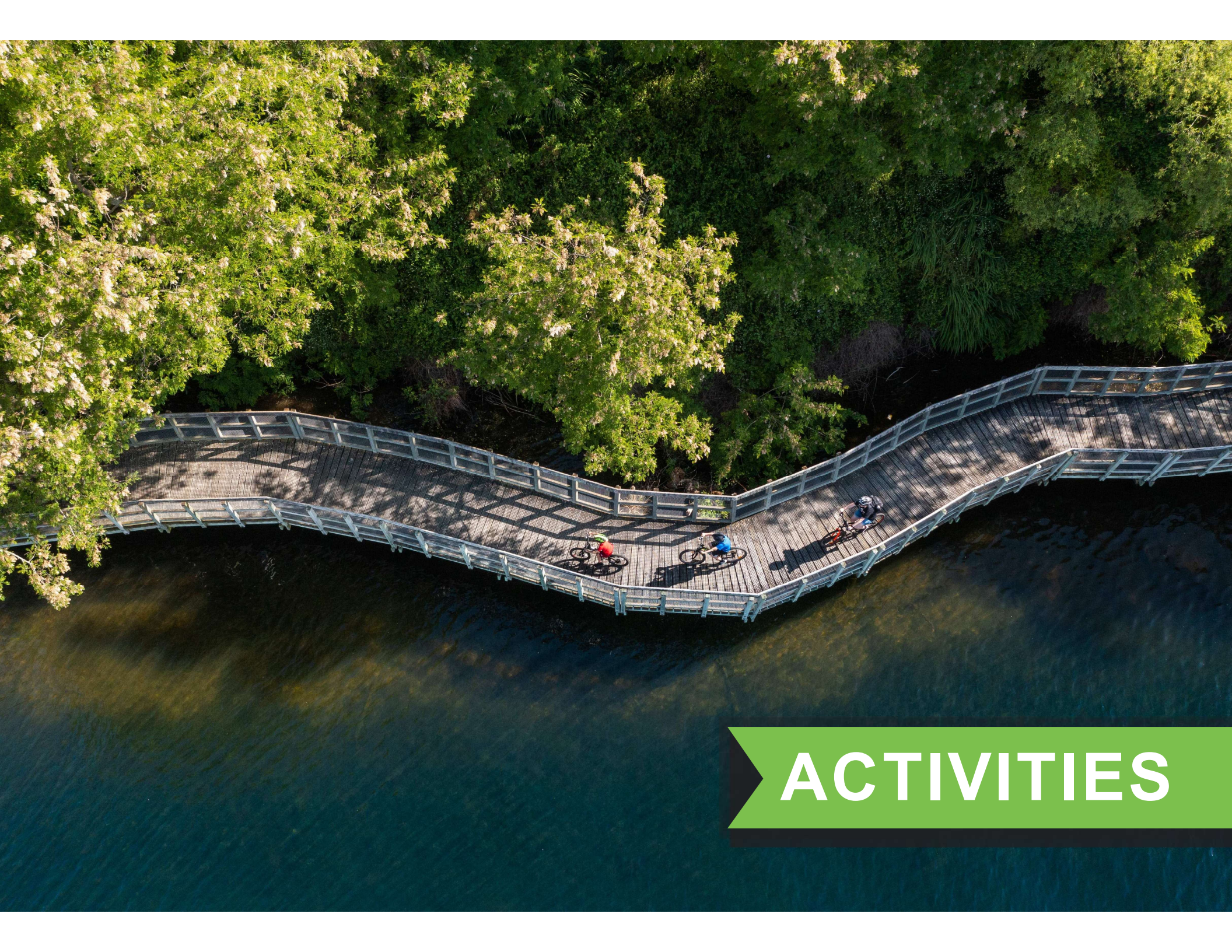
Auckland
1 hr 30 min

Christchurch
1 hr 15 min ✈️

Rotorua
1 hr 25 min

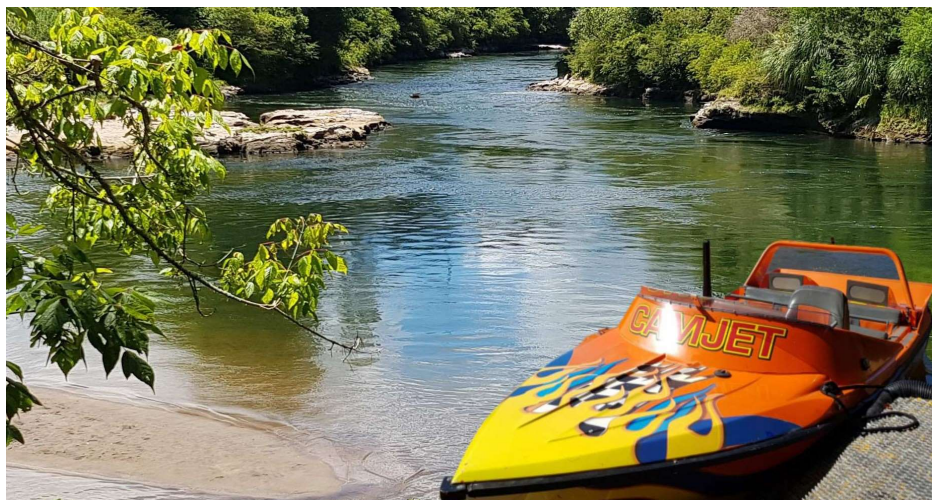
Wellington
1 hr 15 min ✈️





ACTIVITIES

Camjet



Camjet boat tours have been operating since 2011. We offer a range of FIT and group tours on our Extreme or slower Ecological River Cruises for visitors from 3 years plus to enjoy. A great river experience in the deep valley of the mighty Waikato River just 20 minutes from Hamilton City in Cambridge township.

Ecological River Cruise

Enjoy a leisurely guided cruise up the mighty Waikato River and learn its history. Travel through the narrow Cambridge Gorge enjoying stunning waterfalls, fish and birdlife as well as visit the impressive base of the Karapiro Dam and operating hydro power station. No spins, unless requested. 60 mins.

Extreme Tour (Our most popular tour)

There is no better way to jet boat in New Zealand than speeding up the Mighty Waikato River in a 450hp V8 Jet Boat. A thrilling ride to get the heart pumping, adrenaline flowing and faces smiling. Experience the thrill of 360 spins, and take in the sights at up to 88 km/h in a purpose-built jet boat. Perfect for families, friends and anyone with a thrill for adventure. 45 min.

Express Tour

Travelling through the narrow Cambridge Gorge up to Karapiro Dam, you still view the sights, flora and fauna, but with limited commentary You choose the speed from extreme with spins to slow with no spins. Ideal for large groups with limited time.

30 Mins

Note

Hourly departures from 10 am - 4 pm

Not suitable when pregnant or for children under 3 years old.

No wheelchair, good balance & mobility essential.

September – June (except Christmas Day) - Rates on request

| | |
|---------------------|--|
| Contact | Aaron Crossan |
| Trade contact email | bookings@camjet.co.nz |
| Phone number | 0277758193 |
| Address | Dominion Rd Cambridge |
| Website | www.camjet.co.nz |
| Product type | Activity |
| FIT / Groups | Both - 2 adults min fee for departure. 36 PAX Max per hour |
| Qualmark | Gold |

Cornerstone Alpacas



Nestled in the countryside of the Waikato region, Cornerstone Alpacas invites visitors to an unforgettable journey through New Zealand's pastoral landscapes. Situated amidst the idyllic Gordonton Village, this charming farm stands as a testament to the Kiwi alpaca lifestyle, offering a variety of engaging experiences for visitors of all ages. Just an hour's drive from Auckland and a stone's throw away from renowned attractions like Zealong Tea Estate and the Hamilton Gardens, Cornerstone Alpacas is only 10 minutes north of Hamilton.

Tours

Young and old can partake in a variety of alpaca tours, ranging from interactive feedings to leisurely walks with furry friends, each offering a unique glimpse into the daily lives of these endearing creatures. During the tours, guests are greeted by the friendly faces of the alpacas and llamas, whose gentle demeanour and curious nature never fail to captivate hearts. Afterward, visitors can explore the Alpaca Gift Shop, brimming with alpaca-themed souvenirs and locally crafted treasures, before indulging in refreshments at the onsite café. With its scenic outdoor areas and wheelchair-friendly facilities, Cornerstone Alpacas invites guests to unwind amidst the serenity of rural Waikato, making it the perfect destination for a group day trip or a tranquil retreat.

Note

Cornerstone Alpacas open:

- Tuesday - Friday 10am - 4.30pm
- Friday Happy Hour: Cafe open until 9pm
- Saturday - Sunday 10am - 5pm

See website for tour times

| | |
|---------------------|--|
| Contact | Sam Maritz – General Manager |
| Trade contact email | cornerstonepacas@gmail.com |
| Phone number | 0275557887 |
| Address | 49 Peach Road; RD1; Taupiri; 3791 |
| Website | www.cornerstonestud.co.nz |
| Product type | Activity |
| FIT / Groups | Both - Min 2 – Max 80. |
| Qualmark | Silver / Tourism |

Hamilton Gardens



The award-winning Hamilton Gardens is the city's most popular visitor attraction and has a truly unique concept. A collection of gardens like no other on earth, this gem is a living museum of 18 gardens spanning 4 000 years of human culture and civilisation. Perfect for a half day visit, but with enough to easily fill a whole day, Hamilton Gardens is a must see inclusion on any itinerary.

75 Minute Highlights Tour

Join our tour guides for a journey of hidden stories, secret symbols, interesting snippets, and new insights into some of our most popular gardens. Leading you on a 75-minute journey beyond the ordinary, our charismatic guides aren't just hosts, they're garden storytellers.

Unearth tales behind familiar paths, uncovering the symbolism and history nestled within every corner. Discover Hamilton Gardens' best-kept secrets and spaces.

Go beyond the surface beauty and unravel the cultural influences, design concepts, and hidden messages woven into the gardens.

Audio Guide

Discover the gardens at your own pace with a self-guided audio tour providing information about the significance and design detail of each and every one of our 18 gardens. Available in English and Mandarin, allow 2 hours.

Tour + Morning/Afternoon tea

After your highlights tour, relax at the Hamilton Garden's Café overlooking Turtle Lake, and enjoy a hot drink with a selection of sweet and savoury treats. Min 10

Tour + Lunch

Stay for lunch either before or after your highlights tour. This can be served to your group in the Hamilton Gardens café as a shared lunch or as individual meals pre-selected from the tour group menu. Alternatively, arrange to pick up packed lunch bags to enjoy at one of the many picnic spots around you continue to explore the gardens.

Bespoke Tour Experience

We would welcome the opportunity to work with you to create a bespoke tour and catering package to match the interests of your group. Please get in touch to discuss your requirements.

Note

- 90% Wheelchair accessible (some individual gardens are not wheelchair friendly)
- A moderate amount of walking is involved to fully experience the Gardens so an appropriate level of mobility is required.
- Wheelchairs and mobility scooters can be hired with prior notice.
- Open 10am – 6pm September – March 2025
- 10am – 5pm April – October 2025
- Rates on request

Continued on next page

Hamilton Gardens Cont.



| | |
|---------------------|---|
| Contact | Ali Bartleet |
| Trade contact email | Enquiries: ali.bartleet@hcc.govt.nz Bookings: bookings.gardens@hcc.govt.nz |
| Phone number | Ali Bartleet: +64 7 838 6846/ mob: 021424628 Bookings: +64 7 958 5940 |
| Address | Hungerford Crescent, SH1c Cobham Drive, Hamilton East, Hamilton 3216 |
| Website | www.hamiltongardens.co.nz |
| Product type | Activity |
| FIT / Groups | Both |
| Qualmark | Gold |

Hamilton Zoo



Hamilton Zoo is home to more than 450 native and exotic animals, including Aotearoa New Zealand's largest walk-through aviary for native birds and plants. From the savannah with its zebra herd, bison, and giraffes to the majestic tigers or antics of the chimpanzee troop, you'll want to spend all day here.

Animal Encounters

See more, learn more and get close with Hamilton Zoo's Animal Encounters.

Hamilton Zoo's Animal Encounters are immersive experiences that bring you face-to-face with incredible animals.

These unforgettable experiences contribute directly to vital conservation efforts, so you can make a difference while creating lasting memories.

Note

- Animal Encounters suitable for small groups of eight or less.
- Animal Encounter participants must be 5 years or older, and all children to be accompanied by an adult.
- Rates on request

| | |
|---------------------|--|
| Contact | Joe Henderson |
| Trade contact email | zooinfo@hcc.govt.nz |
| Phone number | +64 7 838 6720 |
| Address | 183 Brymer Road, Hamilton, Waikato |
| Website | www.hamiltonzoo.co.nz |
| Product type | Activity |
| FIT / Groups | Both |

Helicorp



Offering scenic tours, and private charter flights, Helicorp is an experienced and well-regarded operator with a commitment to further building on its outstanding reputation.

We offer a range of specialised sightseeing tours of New Zealand, a land of awe inspiring landscapes, lush forests and rugged volcanic mountains. What better way to explore this geographically and culturally diverse land than with a luxurious private helicopter flight? Helicorp can develop a sightseeing tour itinerary specifically for you, accommodating your preferred activities and destinations. Or choose a scenic flight experience from our range of standard products.

City Scenic

Experience the thrill of a helicopter ride above New Zealand's largest inland city. Take in the spectacular views of the international award-winning Hamilton Gardens and the mighty Waikato River. Be amazed by the inspiring Waikato backdrop as you enjoy a comfortable 15-minute scenic flight around the city of Hamilton. \$575 per person.

A Magical Visit to Hobbiton

Experience the wondrous and world famous Hobbiton™ Movie Set, featured in The Lord of the Rings and The Hobbit films. The flight offers spectacular views of the Waikato countryside across to the Kaimai Ranges and then the lush pastures of The Shire. On landing, take a guided two-hour Hobbiton Movie Set tour.

\$780 per person.

City to Surf

A 40 minute heliflight over beautiful Waikato countryside taking in the stunning and rugged West Coast. Guests experience a bird's eye view of the Te Uku wind farm and the tallest wind turbines in NZ, the stunning 55m Bridal Veil Falls and Mount Karioi - an extinct volcano. See popular and world famous surfing spots from the air and fly over the quaint town of Raglan and its extensive inland harbour before returning to Hamilton airport. \$860 per person.

The Ultimate High Tea Experience

A culinary journey to experience the world's purest tea at New Zealand's only tea plantation. Guests arrive in style and tour the flourishing Zealong Tea Estate, enjoy a traditional tea ceremony and a luxurious high tea in this elegant setting. Flights from Hamilton include a city scenic tour and flight over international award-winning Hamilton Gardens.

\$790 per person

[Continued on next page](#)

Helicorp Cont.



Wonders of Waikato

An amazing scenic helicopter flight to some of the best attractions in NZ's diverse and stunning central North Island. Start the day with a scenic flight to NZ only tea plantation Zealong Tea Estate for a tour and spectacular morning tea. Depart for a flight over spectacular country onto the wondrous Hobbiton™ Movie Set for a fun-filled guided tour followed by lunch at The Shires Rest.

The afternoon flight will take guests to the heart of the spectacular Waitomo region for a walking tour through the majestic Cathedral Cave and a magical boat ride through the Glowworm Grotto. Canapes and bubbles will be served under a canopy of forest and sky, before boarding the helicopter for a picturesque return flight to Hamilton.

\$2,865 per person.

Country to Coast

Be sure you have your camera ready for this amazing trip!
Departing from Hamilton you will fly past Te Uku wind farm with the tallest turbines in New Zealand and over bush clad hills past Bridal Veil Falls; a stunning 55m plunge waterfall. Your flight will take you around Mount Karioi, a 2.4 million-year-old extinct volcano, to the rugged and jaw dropping West coast.
Landing in the coastal town of Rgalan you will board a pontoon-style catamaran for a scenic harbour cruise, exploring some of Whaingaroa harbour's spectacular hidden secrets before returning to Hamilton with a scenic Waikato flight.
\$930 per person (Subject to boat operation and available cruises)

Note

- All prices are in \$NZD, inc GST, and require a min of two persons to book.
- Prices valid for 2024 - 25 season, but are subject to change.
- All flights listed depart from Hamilton. Please enquire for prices from departing from other locations e.g. Auckland, Taupo, Rotorua, Tauranga.
- Subject to weather.

| | |
|---------------------|--|
| Contact | Sharon Hartley |
| Trade contact email | info@helicorp.co.nz |
| Phone number | 0 8 00 694354 +64 7 843 3447 |
| Address | 201a Airport Road, Hamilton |
| Website | www.helicorp.co.nz |
| Product type | Activity |
| FIT / Groups | Both. Min 2 - Max 20. |
| Qualmark | Silver |

Hobbiton™ Movie Set



At Hobbiton Movie Set, nestled in the heart of the Waikato region, visitors are welcomed to experience the real Middle-earth™ on a guided walking tour through the lush pastures of the Shire™ as seen in *The Lord of the Rings* and *The Hobbit* Trilogies.

In 1998, Sir Peter Jackson's team of location scouts searched for the iconic rolling hills and lush green pastures of Hobbiton. An aerial search led them to the Alexander farm, a stunning 1,250 acre sheep farm in the heart of the Waikato. In 2009, Sir Peter Jackson returned to film *The Hobbit* trilogy, and he left behind the beautiful movie set you'll see today; 44 permanently reconstructed Hobbit Holes™, in the same fantastic detail seen in the movies. All tours are complete with a visit to The Green Dragon™ Inn for a refreshing beverage from the Hobbit™ Southfarthing™ Range.

Behind the Scenes

Your guide will escort you on a walking tour through Hobbiton Movie Set, in a group of up to 28 people, making for a more intimate experience. Journey around the 12 acre set; past Hobbit Holes™, explore Bagshot Row™ for a glimpse inside the humble home of a Hobbit before heading to The Green Dragon Inn™ for a tippie of choice from our exclusive Hobbit™ Southfarthing™ range.

Selected departures available. 4.5 hours duration.

Hobbiton Movie Set Tours

Your guide will escort you on a fully guided walking tour around the 12 acre set, showing the intricate detailing, pointing out the most famous locations and explaining how the movie magic was made. Journey past the colourful Hobbit Hole™ doors that scatter the hillsides, including the iconic Bag End, home of Bilbo and Frodo Baggins, before arriving at Bagshot Row™ for a glimpse of the interior of a humble Hobbit's home.

Continue along the pathways past The Millhouse, across the double-arch stone bridge and into the world-famous Green Dragon™ Inn, where you will enjoy a complimentary, exclusive beverage from our Hobbit™ Southfarthing™ range to conclude your own Middle-earth adventure.

Tours depart daily from The Shire's Rest and are 2.5 hours in duration.

Hobbiton Movie Set Tour and Lunch Combo

Conclude your Hobbiton Movie Set Tour by experiencing the taste of the Shire with a delicious buffet lunch served in the Party Marquee. The Party Marquee is adjacent to The Green Dragon Inn, with the garden bar seating overlooking the Hobbiton Movie Set, providing an exquisite view for all our guests. Your meal is served buffet style from a specially themed table, bursting with festive hobbit fare, with shared table seating to dine family style with your tour group.

Tour departs daily at 10.10am, 11.10am and 11.40am. 3 hours duration.

[Continued on next page](#)

Hobbiton™ Movie Set Cont.



Second Breakfast Tour

Make the first footsteps in the morning dew on the Movie Set as part of one of our first tours of the day. After being escorted through the 12 acre movie set, and a complimentary exclusive Hobbit Southfarthing beverage at The Green Dragon Inn, follow your guide back over the double arch stone bridge to The Millhouse, where you will be treated to a breakfast spread fit for a Hobbit.

Tour available on select weekends and weekdays. 3.5 hours in duration.

Evening Banquet Experience

Making the most of the remaining daylight, your tour guide will escort you through the 12 acre site, with the tour concluding at The Green Dragon Inn with a complimentary beverage from our exclusive Hobbit Southfarthing range. Guests then move through into The Green Dragon dining room and are treated to a banquet feast fit for a Hobbit. The tables will be heaving with traditional Hobbit fare and, as is the tradition in the Shire, second helpings are encouraged. After dinner guests will re-join their guide to make their way back through the wandering paths of The Shire. The trails will be illuminated by path lighting and handheld lanterns. This stunning journey under moonlight will travel through the village breathtakingly lit up, with Hobbit Hole chimneys smoking and lanterns glowing in the darkness.

Tour available on select weekends and weekdays. 4.5 hours duration.

Note

- Bookings are essential for all including any children and infants.
- Hobbiton Movie Set is only accessible via guided walking tour. Accessibility options available on request.
- Open 7 days.
- Closed 25 December

| | |
|---------------------|--|
| Contact | Henry Horne |
| Trade contact email | henry@hobbitontours.com |
| Address | 501 Buckland Road, Matamata |
| Phone number | 027 478 4962 |
| Website | www.hobbitontours.com |
| Product type | Activity |
| FIT / Groups | FIT - Min 1- Max 41. Groups - 20 plus pax |
| Qualmark | Gold |

Raglan Boat Charters



Raglan boat charters have been operating since 2010 offering scheduled public daytime nature and sunset cruises from Sept till May. Our group tours and private function hire is available all year. NZ North Islands only West Coast harbour cruise is just 40kms from Hamilton City based in the charming sheltered Raglan Harbour. Featuring stunning limestone formations, active harbour and bird life, and wonderful local guide and commentary, this experience appeals to all ages.

Sunset Cruise

Operated during daylight savings this is the North Islands and NZs best sunset experience. Catered with fresh Raglan Fish and Chips and a licensed bar this is a wonderful way to end the day. 90 min cruise - limited to 50 pax.

Lunchtime Nature Cruise

Operated most of the year this nature tour is very popular with international tour operators and FIT tourists. Catered with fresh Raglan fish and chips and a licensed bar. Wonderfully relaxed way to see the harbour in its glory - 90 min cruise, limited to 50 pax.

Private and Group Requests

Hire our vessel exclusively for your groups' private function! Our offerings include educational trips for schools, leisurely cruises with complimentary tea and coffee for seniors, dynamic work functions featuring team-building activities (such as beach walks, Swimming, E-foil SUP and kayak hire, treasure hunts, karaoke and more). We can cater for groups or private functions of up to 70 people. Priced on request.

Note

- Wheelchair access and WC facilities
- Ideal for all ages

| | |
|---------------------|--|
| Contact | Andrew Stump |
| Trade contact email | info@raglanboatcharters.co.nz |
| Phone number | 07 8256522 |
| Address | 92 Wallis st, Raglan 3225 |
| Website | www.raglanboatcharters.co.nz |
| Product type | Activity |
| FIT / Groups | Both. Min 1 - Max 70. |
| Qualmark | Gold |

Raglan Kayak & Paddleboard



Raglan Kayak & Paddleboard has been operating since 2003, providing kayak excursions along the stunning Limestone Coast and its unique pancake rock formations.

Located at the water's edge in the heart of Raglan township, our boutique guided tours are designed to cater for everyone with or without prior experience and are family friendly.

It is said that Raglan's stunning pancake rock formations are the hidden gems of the Waikato.

Limestone Express - Kayak Excursion

Our most popular excursion by far. We guide you right into the heart of the most pristine part of the limestone coast and explore its impressive pancake rock formations.

A spectacular and cruisy 2 hour journey and no experience necessary. Min age - 8yrs, tour runs daily - morning & afternoon.

Kayak & Coffee Excursion – VIP

A private extended version (3hr) of our Limestone Express. Enjoy a lush break as we stop along the way to indulge in a platter of fresh pastries, fruits and locally roasted coffee in a private bay.

This exclusive excursion is planned as a private guide tour, designed for those who appreciate the little extras. Tour times only available upon booking – tide specific

Note

- October – June (except Christmas Day)
- Rates on request.

| | |
|---------------------|--|
| Contact | Steven Reid |
| Trade contact email | candide@raglankayak.co.nz |
| Phone number | 021 1860521 |
| Address | 8 Uenuku Avenue, Raglan, Waikato |
| Website | www.raglankayak.co.nz |
| Product type | Activity |
| FIT / Groups | Both. Min 2 - Max 40. |
| Qualmark / Industry | AdventureMark Certified – Outdoor Adventure Safety Audited |

Raglan Rock Adventures



Raglan Rock offers a range of exhilarating adventures, for people of all ages and abilities! Canyoning under the night sky, rock climbing in middle earth landscapes, or caving with glowworms, we aspire to give every individual that chance to push their limits! Since 2012 we've guided with passion, professionalism and some of the highest qualified guides in the country. Let us take you on the adventure of a lifetime to explore New Zealand's true nature all whilst getting that adrenaline kick!

Karioi Canyoning

Karioi canyoning is an adrenaline-pumping journey that happens rain or shine. Navigate your way up and down waterfalls all whilst immersed in beautiful native New Zealand bush

Karioi Glowworm Canyoning

Abseil and scramble your way down the Karioi Canyon all under the light of your head torch! Look around you and see the incredible New Zealand Glowworms lighting your way.

Family Friendly Caving

The perfect first time and family friendly New Zealand caving experience! Get as muddy as you like, and follow your experienced guide on this unique underground adventure.

Original Pioneers Caving

Be prepared to experience a real caving adventure! Squeeze your way deeper into the cave to see the incredible formations and fossils that are found within the chambers and chasms of Karamu Caves.

Real Rock Climbing Experience

Get geared up and try real rock climbing in the beautiful Waikato countryside! With some of the highest qualified instructors in the industry this trip is suitable for everyone!

Note

- Not suitable for limited mobility. Minimum of 2 people for all tours. Rates on request.

| | |
|---------------------|---|
| Contact | Harry Series |
| Trade contact email | harry@raglanrock.com |
| Phone number | Harry: 0210340265 Office: 0276453547 |
| Address | 248 Wainui Road, Riria Kereopa Memorial Drive, Raglan |
| Website | www.raglanrock.com |
| Product type | Activity |
| FIT / Groups | Both |
| Min / Max numbers | FIT - Minimum 2 - Max 30 Groups - Minimum 10 - Max dependant on activity. |
| Qualmark/Industry | AdventureMark Certified – Outdoor Adventure Safety Audited |

Raglan Surf School



Raglan Surf School Limited began in 1999 and is based in Raglan, Waikato, providing a fun and safe environment to learn the fundamentals of Surfing on one of the worlds most famous Left hand surf beaches. Our Raglan inspired business is all about creating great memories. We do this by sharing our culture, lifestyle, our place and activities.

We deliver this by offering unsurpassed service as seen thru the eyes of our customers.

Group Lessons

The group lesson starts at Ngarunui Beach car park. First, you'll learn the basics of surfing and surfboard vocabulary, stance, posture and a proper dose of water and beach safety. You'll get custom fitted for a wetsuit and surfboard . The instructor(s) will be right there beside you on the beach and in the surf the entire time. Min 10 yrs of age.

Private Lesson

If you've already surfed a bit and you're looking to take your surfing to the next level, a private lesson is perfect for you. During these lessons we get to understand your needs quicker so we can adapt our teaching methods to your personality, style and level.

Family Lesson

The Family surf lesson is designed to provide one instructor specifically for your family as opposed to being included in a larger group.

Note : Minimum of 3 people, maximum of 6

Surf Rentals

A keen surfer and want to 'hang ten' whilst travelling in NZ - get your surfboard and wetsuit at the beach car park from our Surf trailer & truck.

Note

- Operate all year round (except Christmas Day)
- Rates on request
- 6 students per instructor
- Certified Water Safety NZ Surf Instructors
- Wetsuit and surfboard supplied.

| | |
|---------------------|--|
| Contact | Makarini Milroy |
| Trade contact email | raglansurfschool@gmail.com |
| Phone number | +64 7 825 7327 |
| Address | Ngarunui Beach Road, Raglan |
| Website | www.raglansurfschool.co.nz |
| Product type | Activity |
| FIT / Groups | Both. Min 1 - Max 24. |

River Riders



River Riders traces its roots back to 2017 in Ngāruawāhia, with a humble gazebo perched along the riverside and a few bikes to rent. Since then, River Riders has developed into a vibrant cycling community along Te Awa 'The Great NZ River Ride'. Now anchored at the iconic Hamilton Gardens, we have become more than a cycle tourism hub — we're a conduit for electric adventures, cultural connections, and sustainable explorations along the mighty Waikato River. Join us as we pedal through history, culture, and the breathtaking landscapes of the Waikato, creating experiences that linger long after the ride ends.

Experience the Full Te Awa

Starting in Ngāruawāhia e-bike along Te Awa River Ride to our Cycle Tourism Hub at the Hamilton Gardens. Eat & Explore at the Hamilton Gardens while we look after & charge your e-bike. Ride back to your accommodation.

Day 2: Ride from your accommodation to Lake Karapiro & have lunch at Podium Cafe. We will pick up your overnight bag and meet you there before transporting you back to to your vehicle.

E-Bike/E-Trike/Standard Bike/Kids Standard Bike Rental

We provide up to 2 hour, up to 4 hour (half day), Full Day or Multi Day Rentals. Can do both self guided or guided (extra cost) rides.

Cultural Experience & E-Bike Tour

Hamilton Gardens Packaged Tour: Embark on a journey beyond the ordinary with River Riders' diverse array of packaged tours. Rooted in collaboration with local communities and tourism providers along the scenic Waikato River, our offerings extend far beyond a simple ride. Immerse yourself in a tapestry of culture, excitement, and local flavours, as we curate experiences tailored to every palate. From cultural explorations to adrenaline-fueled adventures and culinary delights, there's something for everyone.

Note: minimum of 10

Jet Boat & E-Bike Packaged Tour: Experience the thrill of the Waikato River like never before with our exhilarating Jet Boat and E-Bike Tour! This unforgettable journey combines the excitement of a high-speed jet boat ride with the tranquility of an e-bike exploration along Te Awa 'The Great NZ River Ride.'

Note: minimum of 10

River Riders



Note

- Rates on request
- NCX Seatposts, Waterproof Pannier Bags, Batteries available
- Bike Insurance
- We have 3 locations Ngāruawāhia & Cambridge via pre-bookings ONLY & our Cycle Tourism Hub at the Hamilton Gardens.
- We can cater for all your needs, accommodation, dinners, lunches, Hamilton Garden art, highlight, audio tour and picnics to name a few. We really do go the extra mile to make sure your experience is one you wont forget.

| | |
|---------------------|--|
| Contact | Dee Tairaki |
| Trade contact email | manager@riverriders.co.nz |
| Phone number | 0272655504 |
| Address | Hamilton Gardens, Gate 2, Camelia Carpark, Hamilton |
| Website | www.riverriders.co.nz |
| Product type | Activity |
| FIT / Groups | Both |
| Qualmark | Silver |

Riverside Adventures



Paddle. Pedal. Stride. Pause

Our kayak, bike and walking tours cater for families, couples, groups and schools and can be as gentle or active as you choose. Daylight, twilight or overnight - you can select from one of our existing tours or work with us to plan your own.

Riverside Adventures is has 2 bases one on the shores of Lake Karapiro, and the other at the Grassroots Velodrome in Cambridge, where we're driven by our passion for showcasing the breathtaking beauty of our local landscape. Our guided tours are meticulously crafted to provide both physical thrills and moments of profound connection with the tranquil vistas of the Waikato.

Committed to serving adventurers of all stripes, Riverside Adventures operates across four trails in the central North Island, delivering a diverse array of services including multi-day excursions, expert-guided tours, convenient shuttles, bike rentals, and even kayaking escapades.

Te Awa Cruiser Package

From lake and river to waterfalls, along bridges and elevated boardwalks, the Te Awa River Ride showcases parts of the Waikato that have never before been seen. 2 days, 1 night. Package inclusions:

- One nights accommodation at either Hidden Lake Hotel, Podium Lodge or Cambridge Top 10 Holiday Park
- One breakfast
- Shuttle transport
- 2 x 2-day eBike hire

Min 2 pax

2 day Hauraki Rail Trail Family Getaway

Its time to create awesome family memories! Get the kids, bikes and hit the Hauraki Rail Trail with our 2 day family getaway. This trail is ideal for families. Ride through the 1 km tunnel, over bridges, explore historic mining towns and the popular cascading Owharoa Falls. There is even the animal farm at the Matatoki Cheese Barn for the kids to check out while lunch is being served.

Package inclusions:

- 1 nights accommodation in Paeroa in a family unit
- 1x continental breakfast for 4
- 1x light lunch (Cheese platter for 2 or 1x large pizza)
- 2x light lunch (kids snack pack or Toasted cheese sandwich)
- All shuttle transport & luggage transfers

Min 2 adults 2 children

Hauraki Rail Trail Packages

Book an awesome 4-Day adventure taking on one of New Zealand's iconic cycle trails! Clients enjoy the Firth of Thames, Waikato's historic mining towns and lush farmland. This package is well suited to those wanting to get off the beaten track and includes accommodation, some meals, standard mountain bike hire (e-bikes available), shuttles and transfers. This cycle adventure is suitable for all riders from beginners to those with moderate fitness.

Riverside Adventures Cont.



Central Stunner

Join us on an epic 4-day adventure taking on two of NZ's iconic cycle trails! Come and see what the central North Island has to offer, from the mighty Waikato River to ancient forests and thrilling suspension bridges – this package is well suited to those wanting to get off the beaten track. Suitable for intermediate riders, or for those with a moderate to high fitness level. Package inclusions:

- 4 x nights accommodation
- 2 x breakfast (potentially 4 depending on accommodation)
- 2 x lunches
- All luggage transfers
- All shuttle transport
- PLB (Personal Locator Beacon) Hire
- Pannier
- 4 hour Guided Twilight Glowworm Kayak Tour with back rest

Min 2 pax

Te Awa Weekend Scheduled Shuttle Services

Departure times:

Lake Karapiro: 8am and 12pm

Ngaruawahia: 9:30am and 1:30pm

Stops/Pickups available along the way:

Gaslight Theatre, Cambridge

Hamilton Gardens, Hamilton

On Demand Shuttles / Group Requests

Contact us with your group requests, we can provide a quote for shuttles and/or bike hire.

Note

- Moderate fitness is required.
- Scheduled shuttles operates year round, more services will be added during Summer as demand increases. Rates on request.

| | |
|---------------------|--|
| Contact | Memorie Brooky |
| Trade contact email | memorie@riversideadventures.co.nz |
| Phone number | 027 245 1345 |
| Address | 396 Horahora Road, Piarere |
| Website | www.riversideadventures.co.nz |
| Product type | Activity |
| FIT / Groups | Both. Min 2 - Max 20. |
| Qualmark/Industry | Gold AdventureMark Certified – Outdoor Adventure Safety Audited |

Sanctuary Mountain Maungatautari



Sanctuary Mountain Maungatautari is an ancient, vibrant and Eco-system, surround by a 47km predator-proof fence, making it the largest mainland fenced sanctuary in New Zealand. Home to many of New Zealand's most endangered species. We have a range of guided tours available to book to learn more of this stunning conservation story and the Maungas flora and fauna.

Ancient Forest Guided Tour

Join one of our knowledgeable and engaging guides on easy, gently graded walking tracks. They'll help you spot North Island robins, tomtits, kākā, tūī, bellbirds, hihi, tieke, fantails, kererū and wētā. They'll introduce you to some of our local plants and trees and share stories about the history of this ambitious conservation project.

1.5 hours.

Secrets of the Tautari Wetland

Nestled in the valley below Manu Tītoriori visitor centre is the Tautari wetland. Protected by both a QEII covenant and our pest-proof fence, this picturesque wetland habitat is a safe haven for a growing population of tuatara and a family of takahē. 1.5 hours.

Seasonal Highlights Tour

A shorter version of our Ancient Forest and Secrets of Tautari Wetlands Tours – focusing on the seasonal elements of the environment. Changes through the seasons. Wellness products are available upon request including traditional medicine, and meditation. 1 hour.

Note

- The environment is on the side of a mountain. While there are routes that are suitable for those less able, there is a minimum level of fitness required. Please contact our team for the best options. Rates on request.

| | |
|---------------------|---|
| Contact | Tali Jellyman |
| Trade contact email | marketing@maungatrust.org |
| Phone number | +64 7 870 5180 |
| Address | 99 Tari Road, Pukeatua |
| Website | www.sanctuarymountain.co.nz |
| Product type | Activity |
| FIT / Groups | Both |
| Min / Max numbers | Min 1 - Max 15 (per group). Please book ahead if there are more than 15 people as we can accommodate more with more guides. |
| Qualmark | Gold |

Takapoto Estate



Takapoto Estate is a 600 acre property that sits on three kilometres of waterfront on Lake Karapiro in the Waikato region. Takapoto Estate has been lovingly restored with native trees and plants that now provide a thriving eco-sanctuary to the neighbouring Mangatautari Mountain - an initiative that saw the addition of over 800,000 native plantings.

On this foundation, Takapoto Estate has built world-class equestrian facilities, function areas, boutique cottage accommodation, a horse breeding program, vineyards and wines, a market garden, and Angus bulls. Takapoto Estate encapsulates everything that is beautiful about its surroundings and provides a place for future generations to enjoy its bounty.

Incentive Groups

Utilise our stunning facilities to create a dream event for incentive groups that showcases all that we offer at Takapoto on the banks for Lake Karapiro River.

Garden Tours

Experience a guided tour of the expansive property and its associated eco-initiatives. Established to restore the land and protect the environment, this tour provides an opportunity to learn about the impressive work in developing a thriving eco culture. From pest control techniques to conservation efforts, knowledgeable staff will guide you through every step of their journey.

The diverse plantings have been expertly selected and planted according to the ideal climate. Detailed information about Takapoto's gardening techniques and organic practices are discussed during the tour, including tips for sustainable gardening and pest control. Personal transport essential.

Wine Tasting

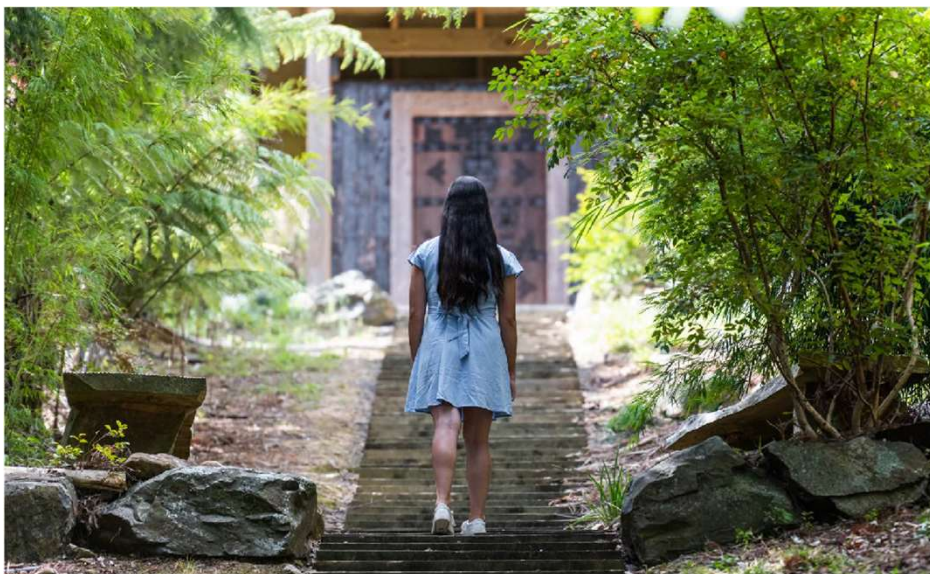
Experience our unique selection of wines not found in mainstream shops. The Estate provides an ideal setting! Wine tasting by appointment only. Food pairing options are available for larger groups and special interest tours for an unforgettable day out.

Note

- Garden Tours: Personal transport essential to take part in this tour. Takapoto Estate is 600 acres and you will be required to have your own personal transport to access various stop points on this tour.

| | |
|---------------------|--|
| Contact | Kate Morrison |
| Trade contact email | kate@takapoto.co.nz |
| Phone number | 0273885920 |
| Address | 90 Finlay Road, Maungatautari 3494, Waikato |
| Website | www.takapoto.co.nz |
| Product type | Activity |
| FIT / Groups | Both |

The Sculpture Park & Arboretum



The Sculpture Park & Arboretum was developed 31 years ago from a derelict quarry site. 30,000 trees and 120 New Zealand Sculptures later the park offers an Art-In-Nature experience for visitors. FIT and group tours enjoy the diverse 2km walk which takes them through a landscape of ponds, cliffs, rocks, flowering shrubs and trees.. A great rural experience in the rolling green hills of the mighty Waikato countryside just 40 minutes from Hamilton City and just 20 minutes from Cambridge.

Garden Tour

Our signature 2 Garden tours include morning tea, a presentation from John Wakeling on the property and a 2km walk around the gardens

Art-In-Nature Experience

A two hour “self-guided” tour suitable for lovers of nature and art. With over 17.5 hectares of planting and 100 New Zealand Sculptures The Self-Guided Tour is available by booking online.

Out of the Box – Family Game for 4 or more

Based on the “escape room” concept this is a game for the family - 2 Adults and 2 children The game takes 2 hours and is about finding lock boxes, solving clues and together to complete the final puzzle. Extra players can be added.

Weddings

We have the capacity for outdoor wedding ceremonies for up to 100 so whether you want a small boutique wedding or a wedding for 100 we can provide a number of options for the ceremony. The perfect location for your wedding day photography and service.

Christmas Functions

The Sculpture Park is the ideal site for your Christmas function with a variety of sites available, catering options and suitable for business or groups of all sizes.

Note

- Not suitable for limited mobility scooters or wheelchairs.
- Open every day (except Christmas Day).
- Rates on request for functions and large groups.

| | |
|---------------------|--|
| Contact | Dorothy Wakeling |
| Trade contact email | info@sculpturepark.co.nz |
| Phone number | 0275670996 |
| Address | 207 Scotsman Valley Road, Tauwhare, RD7 Hamilton |
| Website | www.sculpturepark.co.nz |
| Product type | Activity |
| FIT / Groups | Both. Min 2 - Max 100. |

The Red Barn



Experience a unique and unforgettable outing at The Red Barn, an exceptional event venue in the heart of Waikato's stunning rural landscape. Our boutique private venue is set on a picturesque 500-acre dairy farm and offers an array of group dining and farm tour experiences. Indulge in delicious morning teas and lunches, expertly crafted by our dedicated hospitality team. Take the breathtaking 360-degree views of the Kaimai ranges, Mount Maungatautari, and the Waikato dairy country from our characterful venue on a hill. Hamilton, Tauranga, and Rotorua are less than a 45-minute drive away, and the Hobbiton™ Movie Set is just a stone's throw away.

Farm Tour & Morning Tea

A delightful rural New Zealand experience on our fully functioning dairy farm in the heart of the Waikato. A 30-minute dairy farm tour packaged with a quality morning tea that features delicious home-style baking, local produce and refreshments.

Duration: 60 minutes

Farm Tour & Country Style Lunch

Combine our authentic farm tour and delicious country-style lunch with an interactive and unique butter-making experience – this makes for an unforgettable rural excursion that your clients will long remember. A wonderful combination showcasing rural life and exquisite hospitality.

Duration: 120 minutes

Country Style Lunch

A quality country-style lunch serving only the freshest of seasonal and local ingredients. It offers delicious food, wonderful surroundings and our famous butter-making experience.

Duration: 90 minutes

Note

- Suitable for all ages
- Operate all year round (except Christmas and New Year's Day).
- Enquire re your group if you have any specific requests or timings.
- Rates on request

| | |
|---------------------|--|
| Contact | Bridgette O'Sullivan |
| Trade contact email | bridgette@redbarn.co.nz |
| Phone number | 027 458 6188 |
| Address | 5786 State Highway 29, Karapiro, 3484 |
| Website | www.redbarnexperiences.nz |
| Product type | Activity |
| FIT / Groups | Groups - Min 20 - Max 140 |
| Qualmark | Gold |

Woodlands Estate



Full of history and timeless charm, Woodlands Estate is an outstanding stop between Hamilton and Auckland.

Providing a variety of options for visitors they can take a leisurely stroll around the gardens, enjoy morning tea or lunch in our historic grounds. Woodlands has options, space and parking. Capacity for groups of 10 to 150 with outdoor options for larger groups.

Guided Garden Tours

Starting Spring 2024, take a guided tour and step back in time and discover the memories and stories of this historic homestead and garden estate in the heart of Gordonton's history.

Minimum of 10 per tour

Note

- Rates on request

| | |
|---------------------|--|
| Contact | Estelle Payton |
| Trade contact email | info@woodlands.co.nz |
| Phone number | +64 7 824 3687 |
| Address | 42 Whitikahu Road, Gordonton |
| Website | www.woodlands.co.nz |
| Product type | Historic Homestead, Gardens and Hospitality |
| FIT / Groups | Both |



ACCOMMODATION

Castaways Resort



Situated on the wild coastal cliff tops of Karioitahi Beach on the west coast of Auckland, New Zealand, Castaways Resort is perfect for an effortless escape, a one of a kind wedding, a distraction-free conference, or place to unwind before commencing your NZ adventures.

The newly renovated Castaways Restaurant & Bar offers relaxed a-la-carte dining 365 days a year, and Bersantai Day Spa can treat you to a truly indulgent experience. All of this is within an hour's drive from the Auckland CBD or airport - so close to Auckland, yet a true escape from the ordinary.

Studios

Studio units feature a generous intimate space with living area, super king bed (or two singles), en suite bathroom and a kitchenette with cooking hob, microwave/convection oven, and tea and coffee making facilities. Each studio also has a private deck with ocean views.

Chalets

Our private two-bedroom chalets offer panoramic views over Karioitahi beach. They include two large bedrooms, full kitchen, laundry facilities, open plan dining, lounge area and balcony to enjoy the stunning west coast sunset. Chalets can sleep up to four people in two bedrooms, each bedroom having its own en suite.

Villas

Our new Villas feature full kitchen and laundry facilities, an open plan dining and lounge area, and decks off each of the two bedrooms and the lounge. Each bedroom has its own ensuite and super king beds (or two singles).

| | |
|---------------------|--|
| Product Type | Accommodation - Resort |
| Contact | Diliara Reed |
| Trade contact email | diliara@marsdengroup.co.nz |
| Phone | 0211254780 |
| Address | 685 Karioitahi Road, Waiuku 2683 |
| Website | www.castaways.co.nz |
| FIT / Groups | Both |
| Rooms / Sleeps | 10 Studios / 2 people per Studio 15 Chalets / 4 people per Chalet 16 Villas / 4 people per Villa |
| Qualmark | 4 Star |

Distinction Hamilton Hotel



The Distinction Hamilton Hotel and conference centre is located in the Forest Lake suburb of Hamilton, Waikato. Our rooms are comfortable and ideally suited to both FIT travellers and groups. Guests can enjoy dining at the popular Garnett's Restaurant & Bar and receive complimentary access to the hotel's gym plus free off-street carparking Set close to the Race Course and over the road from Waterworld.

Suites

Spacious, well equipped, air-conditioned suites. Offering a separate lounge and bedroom area. Private ensuite containing a spa bath & separate shower. Perfect for couples wanting a romantic escape or for those requiring a separate lounge area to host friends or colleagues

Superior Rooms

Refurbished, spacious, air-conditioned Hamilton hotel rooms. Superior King Hotel Rooms with one King bed or 2 x queen beds, perfect for families or friends travelling together. Offering a modern, chic, contemporary vibe.

Standard Rooms

These air-conditioned Hamilton hotel rooms are a popular choice for families. Fridge, tea and coffee making facilities. Ensuite with shower over bath and complimentary Distinction toiletries.

Note

- All superior rooms have been refurbished
- Standard rooms all have new beds

| | |
|---------------------|--|
| Product Type | Accommodation |
| Contact | Carole Spicer |
| Trade contact email | Reservations@distinctionhamilton.co.nz |
| Phone | +64 7 849 0860 |
| Address | 100 Garnett Avenue, Forest Lake, Hamilton |
| Website | www.distinctionhotelshamilton.co.nz |
| FIT / Groups | Both |
| Rooms / Sleeps | 146 Rooms, 1 Suite |
| Qualmark | Silver |

Heartland Ambassador Hotel Hamilton



In the heart of the mighty Waikato, Hamilton is a cultural hub for the rich agricultural and pastoral surrounds, as well as many iconic kiwi tourist attractions nearby. Location is also key for the Heartland Ambassador Hotel Hamilton, perfectly positioned with only a short walk to many of the city's key attractions like FMG Stadium, Seddon Park, Claudelands Event Centre and the CBD.

Standard Studio Room

Our Standard Studio Rooms come with two queen beds sleeping up to 4 guests. All rooms come with a private balcony or patio

Our Superior & Superior Plus Studio Rooms come with two queen beds sleeping up to 4 guests. All rooms come with a private balcony or patio and all the amenities you need for a short stay.

Motel style room

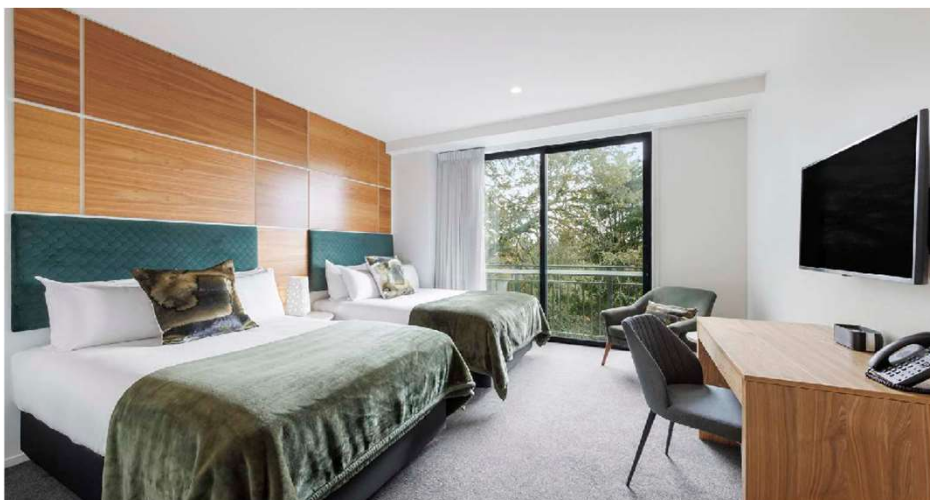
The motel style rooms come with 1 and 2 Bedroom options have a Queen Bed, and 2 or 4 single beds sleeping up to 6 guests. Perfect for families or small groups, all rooms come with a kitchenette and dining table. Couches available in selected rooms. All rooms come with a private balcony or patio.

Note

- Breakfast Available daily 7-10am - \$26 for full cooked buffet

| | |
|---------------------|--|
| Product Type | Accommodation - Hotel / Motel |
| Contact | Emma Courtney |
| Trade contact email | emmac@heartlandhotels.co.nz |
| Phone | +64 7 839 5111 |
| Address | 86 Ulster Street, Hamilton |
| Website | www.scenichotelgroup.co.nz/locations/new-zealand/hamilton |
| FIT / Groups | Both |
| Rooms / Sleeps | 38 rooms / Sleeps 152 12 Motel units sleeping 51 |
| Qualmark | 3.5 Hotel rooms 3 Motel rooms |

Hidden Lake Hotel and Apartments Cambridge



Independently owned accommodation on the shores of the tranquil Lake Te Koutu in Cambridge CBD. Built with sustainable design aesthetics overlooking a picturesque treed domain surrounded by nature. Rooms include luxury fittings, generous space and award-winning Zealong Teas as well as walk-in showers. Superking sized beds are standard with two queen sized beds for singles. Featuring local organic produce in the scenic D'Arcy's Garden Restaurant. Features and facilities show creative flair and an absolute commitment to sustainability. Optimised for groups, tours and visitors to the region.

Rooms

We offer a selection of rooms including Executive King Rooms, Executive Double Double Rooms and Accessible Rooms.

Apartments

One and two bedroom apartments with full kitchen and laundry facilities. Some have 2 x bathrooms.

| | |
|---------------------|---|
| Product Type | Accommodation - Hotel and S/C apartments |
| Contact | Glenda Hamilton |
| Trade contact email | glenda@hiddenlake.co.nz |
| Phone | +64 7 282 1593 |
| Address | 34E Lake Street, Cambridge, 3434 |
| Website | www.hiddenlakehotel.co.nz |
| FIT / Groups | Both |
| Rooms / Sleeps | 13 x Executive King Rooms 13 x Executive Double Double Rooms 3 x Accessible Rooms 1 x One Bedroom Apartment 6 x Two Bedroom Apartment |
| Qualmark | 5 star - Gold |

Ibis Tainui Hamilton



The hotel is your gateway to the Waikato region commanding a unique location on the Waikato River. Just minutes from bustling Hamilton city and a short stroll from local attractions including SkyCity Casino and Waikato Museum. An ideal base for your holiday, you're within an easy drive of Hamilton Gardens and Hamilton Zoo and just an hour's drive from the regions incredible Waitomo Glowworm Caves and Hobbiton Movie Set.

Rooms & Facilities

The hotel offers 126 well-appointed accommodation rooms. Located in the heart of the city along the mighty Waikato River, the hotel also boasts Maakona restaurant & bar and conference space for up to 80 delegates.

Note

- Full renovation completed December 2022.

| | |
|---------------------|--|
| Product Type | Accommodation - Hotel |
| Contact | Glenys Taylor – Reservations Manager |
| Trade contact email | glenys.taylor@accor.com |
| Phone | +64 7 859 9200 |
| Address | 18 Alma Street, Hamilton |
| Website | www.all.accor.com |
| FIT / Groups | Both |
| Rooms / Sleeps | 126 accommodation rooms, mixture of king and twin |
| Qualmark | 3.5 star - Gold |

Jet Park Hamilton Airport Hotel



Located only a short walk from Hamilton airport terminal, Jet Park Hamilton Airport Hotel is the ideal place to stay for business or leisure. The fully refurbished 4-star hotel offers 62 accommodation rooms, with five conference rooms for up to 200 people.

Our distinctive countryside setting, paired with our generous hospitality and meticulous attention to detail, ensures that your stay will be more than just a place to rest for the night.

Accommodation

Our modern, refurbished accommodation offers a range of options including superior rooms, executive suites, and family suites. Each room is equipped with individually controlled air conditioning, an office desk and chair, iron & ironing board, a safe, Chromecast, SKY TV, unlimited Wi-Fi, and tea and coffee facilities.

Guest Facilities

Enjoy our range of guest facilities including an outdoor swimming pool, tennis court, basketball hoop, onsite gym, garden space, guest laundry, and complimentary overnight parking for the duration of your stay. Grab a bite from the Koura Café or delight the tastebuds at our onsite à la carte bistro, Propeller Restaurant and Bar, with an inviting outdoor beer garden.

Meeting Facilities

JetPark's Conference Centre, equipped to host up to 200 guests, features a private boardroom and four spacious conference rooms with the capability to open onto a private courtyard setting. Each space is equipped with full AV facilities and benefits from natural lighting.

Note

- JetPark is an eco-friendly and sustainable hotel. Pet-friendly accommodation is available, and rates can be provided on request.

| | |
|---------------------|--|
| Product Type | Accommodation - Hotel and Conference Centre |
| Contact | Stuart Thompson |
| Trade contact email | Stuartt@jetpark.co.nz |
| Phone | 0 8 0 0 5 3 8 4 6 6 |
| Address | 201 Airport Road, Hamilton, 3282 |
| Website | www.jetparkhamilton.co.nz |
| FIT / Groups | Both |
| Rooms / Sleeps | 62 Rooms/ 2- 4 per room |
| Qualmark | 4 Star - Silver |

Lake Karapiro Lodge



Lake Karapiro Lodge is situated on a ridge with stunning views overlooking Lake Karapiro, Sanctuary Mountain Maungatautari and beautiful Waikato rural farming area. 15 minutes south of Cambridge on SH1.

A Luxury Lodge, Lake Karapiro Lodge provides private, peaceful and elegantly furnished guest suites with king sized beds, ensuites, and a guest lounge with open fire in the winter. Enjoy the steaming spa pool, infrared sauna, and in season, the heated salt-water pool. Opened in 2001, Lake Karapiro Lodge has a strong reputation for its amazing views, its quiet restful environment to re-charge, and celebrate special occasions. Room rates include a full silver service breakfast using locally sourced ingredients and prepared from fresh directly to the table.

New owners in 2022 Colin & Jan Pauling, attend to every guest personally, offer the high levels of amenity and service offered by the previous owners for 20 years. They continue to enhance this special place for every guest to leave with wonderful memories.

Suites

The Versace Suite (Superior) with iconic Versace ceramic tiles and vanity, large bath and a separate shower. Lounge areas with period furniture plus a dedicated 'Juliet Balcony' to enjoy the expansive views and sunsets.

The Sir Tristram Suite (Superior) is dedicated to the famous local Cambridge Stud Gelding Sir Tristram by Sir Patrick Hogan. Featuring a large bathroom with separate bath and shower. Lounge areas with period furniture plus a dedicated 'Juliet Balcony' to enjoy the expansive views and sunsets.

Ground Floor Suites - three large suites include outdoor patios overlooking the lake and country views, perfect to enjoy afternoon sun and sunsets. Each has a generous private ensuite, luxury bathroom accessories, smart TV and work desk.

Note

- The lodge in deference to the peaceful and quiet enjoyment of all guests suggest that the environment is not suitable for children.
- On-site waste disposal system and harvests and treats its own potable water

| | |
|---------------------|--|
| Product Type | Accommodation - Boutique Luxury Accommodation |
| Contact | Colin Pauling |
| Trade contact email | reservations@karapiro lodge.co.nz |
| Phone | 021997107 |
| Address | 1829F Tirau Road, Karapiro, Waikato 3484 |
| Website | www.karapiro lodge.co.nz |
| FIT / Groups | FIT |
| Rooms / Sleeps | 2x Superior Suites with full bathroom / Sleeps 4 3x Lake View Rooms with private En Suites / Sleeps 6 |

Matamata Lodge



Set amongst stunning 10 acres of rolling pastures, enjoy interacting with cattle and pet sheep on this unique lifestyle property. Centrally located just 5 minutes to Matamata township and a short drive to Hobbiton Movie Set. We offer a private self-contained studio with picturesque views of the farm, fully renovated to the highest quality and offering many special features, wander the paddocks and enjoy the stunning sunsets and peaceful location.

Studio

Guest enjoys King bed or twin (w ensuite), Kitchenette, lounge and a private spacious courtyard with BBQ. We provide complimentary expresso, homemade goodies, and continental breakfast. Evening meals available on request.

Note

- Full refurbishment May 2022
- Not suitable for small children.
- Operate All year- Split seasons
- Rates on request

| | |
|---------------------|--|
| Product Type | Accommodation - BnB - Self Contained |
| Contact | Glenn Gairdner |
| Trade contact email | info@matamatalodge.co.nz |
| Phone | 0275673666 |
| Address | 115 Gunn Road, Matamata |
| Website | www.matamatalodge.co.nz |
| FIT / Groups | FIT |
| Rooms / Sleeps | 1 Studio / 2 people – King bed or Twin |

Novotel Tainui Hamilton



Make yourself at home in 4.5 star comfort at Novotel Tainui Hamilton in the city centre. Fine dining, tourist attractions, scenic strolls along the river and so much more are within your grasp. Explore the city centre or travel a little further afield to experience the wonder of the regions Waitomo glow-worm caves, Raglan surf beach or Hobbiton Movie Set.

Rooms & Facilities

The hotel offers 217 contemporary rooms including 4 suites. Located in the heart of the city along the mighty Waikato River, the hotel also boasts a restaurant, bar, conference space and gym.

| | |
|---------------------|--|
| Product Type | Accommodation - Hotel |
| Contact | Glenys Taylor – Reservations Manager |
| Trade contact email | glenys.taylor@accor.com |
| Phone | +64 7 859 9200 |
| Address | 7 Alma Street, Hamilton |
| Website | www.all.accor.com |
| FIT / Groups | Both |
| Rooms / Sleeps | 217 accommodation rooms, mixture of king and twin |
| Qualmark | 4.5 star - Gold |

Oar & Paddle



The Oar and Paddle is an established and very popular accommodation provider offering a special uniqueness and charm making it a favoured place to stay at Lake Karapiro.

With top quality furnishings and stunning lake views, nestled in large mature grounds. We offer privacy yet our close proximity to Cambridge and ideally positioned to enjoy lake sporting events being adjacent to the Te Awa cycle track enabling guests to experience the best of both worlds.

The Oarhouse Chalet

A stand alone luxury two bedroom, two ensuite, Chalet with an unsurpassed outlook up and down Lake Karapiro. Full kitchen, spacious lounge, air-conditioning, fire place, decking and out door dining, carport and laundry.

The Paddlehouse

Two bedroom, two ensuite Cottage, Kitchen, very generous lounge, air-conditioning. Enjoy fantastic views to the lake with the privacy of your own out door area.

The Scullers Suite

A very large room with two Queen beds and the possibility of adding another Single bed, ensuite. Private entrance, tea and coffee making facilities, small fridge, large TV, air-conditioning.

Note

- Rates and dates on request

| | |
|---------------------|--|
| Product Type | Accommodation - Self-contained - Boutique |
| Contact | David Coldicutt |
| Trade contact email | oarandpaddlenz@gmail.com |
| Phone | 021827388 |
| Address | 808 Maungatautari Road Cambridge |
| Website | www.oarandpaddle.co.nz |
| FIT / Groups | Both (small groups) |
| Rooms / Sleeps | 1 S/C Chalet Sleeps up to 6 people 1 S/C Cottage / Sleeps up to 5 people 1 Suite sleeps up to 5 people |

Podium Lodge



The vision of Podium Lodge was to create a one-of-a-kind accommodation experience. One that thrived on a love for our region, sport and community. Designed with an 'Olympic Village' feel in mind, Podium Lodge is a place for visitors to enjoy the spirit of Cambridge – from cyclists and sports teams, to schools, families, and independent travellers.

Studios

Sleeps max 2 guests. Comfort is not compromised in this functional and modern studio room. Spacious and well-appointed. Bathroom facilities include a bath. Self-catering kitchenette. Quality king single beds or a super king and superior linen give the promise of a restful sleep.

2-Bedroom Apartments

Four king single beds or 2 Super kings (or combo). Kitchenette facility for easy self-catering. Lounge area. Cleverly designed bathroom amenities, enable guests to rest and relax after a day of training, competing and activity.

Dormitory

A 14-bed sleeping option, purpose built for large groups or teams travelling and staying together.

Features Include: Large kitchen, Two lounges, Dining room, Bathroom amenities, Quality beds and linen in dormitory style sleeping quarters.

| | |
|---------------------|---|
| Product Type | Accommodation - Motel, Self-Contained |
| Contact | Bill Heslop |
| Trade contact email | manager@podiumlodge.co.nz |
| Phone | +64 7 974 1710 |
| Address | 20 Peake Road, Cambridge |
| Website | www.podiumlodge.co.nz |
| FIT / Groups | Both |
| Rooms / Sleeps | <ul style="list-style-type: none"> • 24 studios – sleep 2 • 6 x 2bedroom apartments – sleep 4 • Dormitory – sleeps 14 / 4 bedroom house – sleeps 8 |
| Qualmark | 4.5 Star - Silver |

Raglan Holiday Park Papahua



Situated on a peninsula in the Raglan Harbour, Raglan Holiday Park is almost entirely surrounded by water. Vehicle access is by a lone road bridge making our Raglan accommodation a private hideaway. Just 2 minutes walk to the beach – this is peace and tranquility at its best.

Raglan Holiday Park offers tent sites, powered campervan or caravan sites, backpacker type accommodation, cabins, self contained and motel units. We also offer a small conference facility, our Hui Room for hire. So look no further for your ideal Raglan accommodation.

Self Contained Accommodation

Kitchenettes or full kitchens, Tea & coffee, Queen and king beds available, private bathrooms, smart TV, outdoor deck/courtyard.

Bunkroom / lodge / cabin and camping facilities

Communal kitchens, bathrooms, dining areas, games room, TV room, BBQ areas, Laundry facilities, Free WIFI

Facilities available for all guests

Free WIFI, playground with jumping pillow, BBQs and outdoor dining, games room, laundry facilities.

Note

- Exclusive group facility rates on request

| | |
|---------------------|---|
| Product Type | Accommodation - Holiday Park Motel / self contained Camping Cabins / Lodges |
| Contact | Gillian Le Prou |
| Trade contact email | groups@raglanholidaypark.co.nz |
| Phone | +64 7 825 8283 |
| Address | 61 Marine Parade, Raglan |
| Website | www.raglanholidaypark.co.nz |
| FIT / Groups | Both |
| Rooms / Sleeps | <ul style="list-style-type: none"> • 100+ camping sites • Group Lodge and Bunkrooms sleep 54 or 28 • 6x Holiday and Cozy Cabins • 20x Motel self contained units- Studio, 1 & 2 bedroom |

Ramada By Wyndham



Conveniently located opposite the banks of the mighty Waikato River in Hamilton Central's thriving cultural heart, Ramada Hamilton City Centre offers privacy, comfort and value for business travellers, tourists and families alike. Behind the Ramada Hamilton's historic 19th century facade lie 69 modern and spaciouly appointed rooms, which offer a home away from home for you to explore Hamilton's rich cultural, natural and entertainment offerings.

Economy Rooms

Convenience and comfort on a budget. These fully-equipped hotel style rooms can be configured with either two double beds or two king singles, The room is air-conditioned with a small bathroom

Studio Twin Rooms

Generous space and value in the heart of Hamilton Central. Ramada Hamilton's studio twin rooms offer additional space, providing extra room for a desk, rooms is air-conditioned with private bathroom including a shower and hair dryer

Queen Room

Space and comfort with a touch of city chic. Ramada Hamilton's cosmopolitan hotel-style superior queen rooms offer privacy and cosiness in a modern 19m2 layout, which features a queen bed, desk and modern bathroom with shower and hair dryer.

King Room

Room to stretch out in a modern retreat. Our contemporary style superior king room offers value for money and room to work and eat. Features include desk, and tea and coffee making facilities. Fully air-conditioned

1 Bedroom Apartment

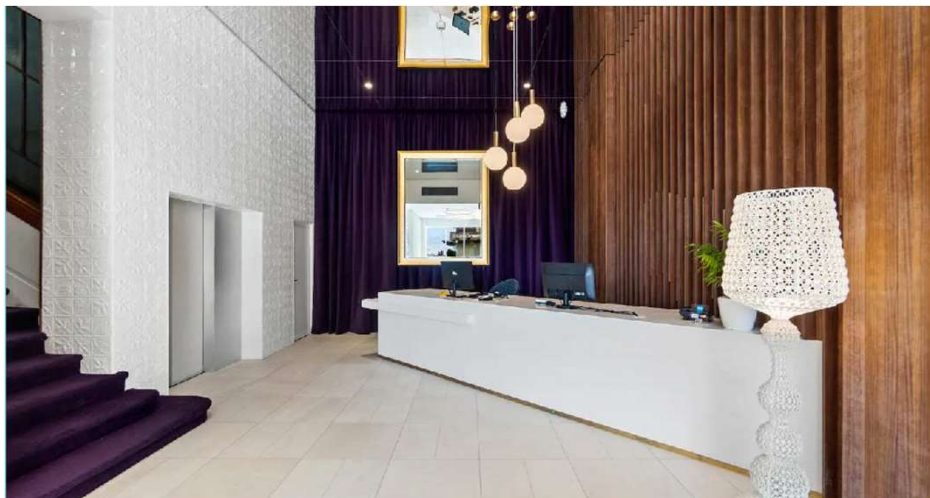
Space and privacy for independent travellers. Ramada Hamilton's one-bedroom apartments occupy 40m2 which includes a separate living area and bedroom. Fully air-conditioned with a private, modern bathroom with shower, self-sufficient guests will appreciate the kitchenette.

2 Bedroom Apartment

Spacious family retreat. Spread out over 64m2, with separate bedrooms, lounge and a fully-equipped kitchen.

[Continued on next page](#)

Ramada By Wyndham cont.



Meeting Facilities

Offering impeccable service and top tier corporate facilities making meetings a cinch, our hotel can host up to 120 delegates, offering 4 venue spaces with onsite catering and accommodation options, your meeting will be in good hands with us.

Note

- Partial refurb 2020
- Suitable for small children.
- Certified Service animals allowed
- On site Gym and restaurant
- Rates on request

| | |
|---------------------|--|
| Product Type | Hotel |
| Contact | Reception Team |
| Trade contact email | Res@ramadahamilton.co.nz |
| Phone | +64 7 839 4993 |
| Address | 287 Victoria Street, Hamilton Central, 3204 |
| Website | www.ramadahamilton.co.nz |
| FIT / Groups | Both |
| Rooms / Sleeps | 14 Economy Twin rooms (2 x double/single beds) 15 Studio Twin rooms (2 x Queen beds) 8 Superior Queen rooms (1 x Queen bed) 25 Superior King rooms (1 x King bed) 2 Family rooms (R1 King bed/R2 2 x Single beds) 3x 1 Bedroom Apartments (1 x Queen bed/ full lounge/kitchen) 2x 2 Bed room Apartments (Both rooms 1 x Queen bed/ full lounge and kitchen) 2x 2 Bedroom Family Apartments (R1 King bed /R2 2x Single beds + full lounge and kitchen) |

Rural Tours



Rural Tours is New Zealand's largest farmstay accommodation provider. Based in Cambridge, Waikato, Rural Tours has 30+ years' experience, and an extensive database of hosts throughout the region. Our team has a reputation for providing a prompt and efficient reservations service. Our clients will experience the rural lifestyle, and learn about farming and sustainability from their hosts.

Accommodation

You will be accommodated in a guest room within the family home, or in some cases you will be accommodated in self-contained accommodation. You will become a part of the family for the duration of your stay and treated as friends rather than guests. Each Rural Tours farmstay is offered on a dinner, bed and breakfast basis.

Note

- Rates on request.

| | |
|---------------------|--|
| Product Type | Accommodation - Farmstay accommodation (Nationwide) |
| Contact | Reservations |
| Trade contact email | reservations@ruraltours.co.nz |
| Phone | +64 7 827 8055 |
| Address | Various around Waikato |
| Website | www.ruraltours.co.nz |
| FIT / Groups | Both |
| Qualmark | Bronze |

Takapoto Estate - The Lakehouse



Takapoto Estate is a 600 acre property that sits on three kilometres of waterfront on Lake Karapiro in the Waikato region. Takapoto Estate has been lovingly restored with native trees and plants that now provide a thriving eco-sanctuary to the neighbouring Mangatautari Mountain - an initiative that saw the addition of over 800,000 native plantings.

On this foundation, Takapoto Estate has built world-class equestrian facilities, function areas, boutique cottage accommodation, a horse breeding program, vineyards and wines, a market garden, and Angus bulls. Takapoto Estate encapsulates everything that is beautiful about its surroundings and provides a place for future generations to enjoy its bounty.

The Lakehouse

The Lakehouse cottage at Takapoto Estate is a luxurious and serene escape with stunning views of Karapiro. The pantry and fridge are stocked with breakfast items that were produced and harvested from the Estate's own chickens, bees, Angus beef, vineyard, olive trees and market garden, making for a truly unique and memorable experience. Whether you're looking to relax and take in the natural beauty of the surroundings or explore all that the region has to offer, The Lakehouse is the perfect place to stay.

Partner your guest stay with a range of our tour offerings for a totally immersive taste of Waikato and our exclusive estate.

Note

- Not suitable for small children.

| | |
|---------------------|--|
| Product Type | Accommodation - BnB - Boutique |
| Contact | Kate Morrison |
| Trade contact email | kate@takapoto.co.nz |
| Phone | 0273885920 |
| Address | 90 Finlay Road, Maungatautari 3494, Waikato |
| Website | www.takapoto.co.nz |
| FIT / Groups | FIT |

Te Karaka Lodge



A brand new architecturally designed lodge with just 10 guest lodgings for an intimate and hosted experience, a place to unwind and escape; connect with nature and experience the stunning beauty of rural New Zealand.

The working farm welcomes guided farm tours and the Lodge facilities include an outdoor heated spa swimming pool, lawn games and several verandas on which to relax and absorb the sound of native birdsong. Interior spaces include a large lounge and dining area with bar and cosy fireplace for those chillier evenings.

Accommodation

Lodge rooms offer stunning views across rolling farmland, each with a private outdoor space, comfortable seating and luxurious amenities. Each stay includes a delicious breakfast, complimentary Wifi and parking.

Note

- Rate includes both Dinner and Breakfast effective immediately
- Closed July & August. Please enquire for exclusive use during this time.
- Rates on request.

| | |
|---------------------|--|
| Product Type | Accommodation - Lodge/Hosted/Farm Stay |
| Contact | Danielle Geraets |
| Trade contact email | stay@tekarakalodge.co.nz |
| Phone | 027 303 2485 +64 9 242 9229 |
| Address | 1833 Port Waikato-Waikaretu Road, Waikato |
| Website | www.tekarakalodge.co.nz |
| FIT / Groups | Both |
| Sleeps | 10/20 |
| Qualmark | 5 Star - Silver |

The Clements Hotel



A stunning renovation of a heritage building formerly known as the Masonic Hotel and built in 1911, this project has truly been a labour of love. The sensitively restored and renovated building is being transformed into a 5-star boutique hotel featuring 29 guest rooms and complemented by extensive F&B operations.

Steeped in history, this property is iconic. The plush basement bar will have a prohibition era vibe with an extensive cocktail list and the restaurant serves contemporary cuisine, inspired by the local Cambridge food scene, using fresh, locally sourced ingredients.

Original features within the hotel include a magnificent sweeping staircase, stunning stained-glass windows, parquet flooring, high ceilings, and luxurious furnishings creating a refined and relaxed atmosphere. The Clements Hotel promises to be the perfect backdrop for an indulgent and elegant break in the charming and popular town of Cambridge.

Accommodation

Our elegant, well-appointed 29 bedrooms offer all the comforts of home alongside the delights of a premium destination. With beautiful guest rooms, large bathrooms and luxurious amenities, you are sure to unwind and relax in your personal sanctuary.

Note

- Opens 10 March 2025
- This brand new, high-quality hotel offering will target the international leisure and MICE markets.

| | |
|---------------------|--|
| Product Type | Accommodation - Boutique Hotel |
| Contact | Cameron Kellow |
| Trade contact email | gm@clements.co.nz |
| Address | 68/72 Duke Street, Leamington, Cambridge |
| Website | www.clements.co.nz |
| FIT / Groups | Both |
| Rooms / Sleeps | 29 rooms - sleeps 58 |

Ventura Inn and Suites



Ventura Inn and Suites is conveniently located in the south end of Hamilton's central business district, handy to local business, amenities and a variety of Restaurants. We offer good old Kiwi hospitality, free parking, wifi and continental breakfast all included in the rate. All rooms are fully air conditioned and we have 24 hour Reception.

All rooms have complimentary tea and coffee, wifi. Continental buffet breakfast available for \$13pp. Our Deluxe rooms come with spa baths and studios showers over baths.

Centrally located with off street complimentary parking available. Outdoor unheated fresh water swimming pool and discounted Gym access available.

Note

- 1400 checkin and 1100 checkout.
- Rates on request.

| | |
|---------------------|---|
| Product Type | Accommodation - Hotel |
| Contact | Trevor Armour |
| Trade contact email | reservations@venturainns.co.nz |
| Phone | +64 7 838 0110 |
| Address | 23 Clarence Street, Hamilton |
| Website | www.venturainns.co.nz |
| FIT / Groups | Both |
| Rooms / Sleeps | 32 Standard Studio Queen & Single. Sleeps 3 8 Deluxe Studio King Bed. Sleeps 2 8 Standard Suite. King Bed & Sofa Bed Sleeps 4 2 Deluxe Suite. King Bed & Sofa Bed Sleeps 4 |

Villa Walton



Villa Walton offers elegant and relaxing accommodation within our historic homestead established in 1904 and our recently renovated private cottage. Excellent dining available and all room rates include a full breakfast. Set in picturesque Matamata area, overlooking local Dairy Farms and the Kaimai Ranges this peaceful location awaits you. Centrally located to Hobbiton, Cambridge, Te Aroha, Hamilton, Tauranga, Rotorua and Waitomo.

Beautiful gardens - we host many garden tours and weddings (Max 50 guests).

Orr Room

A Queen size bed in compact but gorgeous room with own lovely en-suite.

Cole Room

A large room with luxury King bed and en-suite and air conditioned.

Bray Room

A second large King room with en-suite and air conditioning. All rooms have safes, fridges, etc

The Walton Cottage

The self-contained cottage is a favourite with couples wanting a romantic getaway. A private outdoor bath, private courtyard and every amenity makes this a popular room. Sleeps two only.

Note

- Adults only, unless booking whole property
- Open all year - no seasonal rates
- Wholesale please enquire re rates
- Evening meals by prior arrangement

| | |
|---------------------|--|
| Product Type | Accommodation - BnB - Luxury Boutique |
| Contact | Sue & Neil McGregor |
| Trade contact email | info@villawalton.co.nz |
| Phone | +64 7 888 3585 / mob: 021 237 7849 (Sue) |
| Address | 303A Walton Road Walton, Matamata |
| Website | www.villawalton.co.nz |
| FIT / Groups | FIT and Groups of up to 4 couples |
| Rooms / Sleeps | 4 Beds / 8 people |